

ISO Compliance

Somnetics is an ISO 9001:2008, ISO 27001:2005 and ISO 20000-1:2011 certified organization and complying with its strict guidelines further boosts our capability statement in the various ways.

ISO Benefits

ISO 9001:2008 Quality Management

- A customer focused organization
- Leadership
- The involvement of people
- Ensuring a process approach
- A systematic approach to management
- A factual approach to decision making
- Mutually beneficial supplier relations
- Continuous improvement

ISO 27001:2005 Information Security Management

- Protects critical and sensitive information from malign sources such as
 - Vandalism/ terrorism
 - Fire
 - Misuse
 - Theft
 - Viral attack
- Holistic, risk-based approach to secure information and compliance
- Demonstrate security status according to internationally accepted criteria
- Create a market differentiation due to prestige, image and external goodwill
- Ensure hassle free management of information, with digitized customer forms!

ISO 20000-1:2011 IT Service Management

- Closer alignment to both ISO 9001 and ISO/IEC 27001
- Clarification of existing definitions and addition of new definitions
- Introduction of the term "Service Management System" (SMS) and aligning the standard with the concept of a SMS
- Clarification of the requirements for the governance of processes operated by other parties
- Addition of requirements for the design and transition of new or changed services

Policies and compliances of ISO 20000 maps directly to that of CMMI Service and facilitates seamless and flawless project delivery resorting to

- Capacity & availability management
- Incident resolution & prevention
- Service system transition
- Service continuity
- Requirement management
- Project planning
- Project monitoring & control
- Supplier agreement management
- Measurement & analysis
- Process & product QA
- Configuration management
- Service delivery



Green Edge

Somnetics corporate social responsibility extends to environment protection in all its endeavors where it has promoted green computing methods. Somnetics product usage can lead the Customer's towards green computing. As a small contribution in reducing global warming we have cut down on the usage of our servers, networks, storage equipment, cooling and UPS. The bigger vision is to promote reduction of non-biodegradable pollutants and carbon content in ecology. Our products and solutions tend to save energy resources in every possible way and make the earth greener.

No part of this booklet, including the softwares and services described in it, may be reproduced, transmitted, transcribed, stored in a retrieval system, or translated into any language in any form or by any means, except documentation kept by the purchaser for backup purposes, without the express written permission of Som Imaging Informatics Private Limited.

Specifications and information contained in this booklet are furnished for informational use only and are subject to change at any time without prior notice and should not be construed as a commitment by Som Imaging Informatics Private Limited. Som Imaging Informatics Private Limited assumes no responsibility or liability for any errors or inaccuracies that may appear in this booklet, including the softwares and the services. Specifications are subjected to change any time at the discretion of Som Imaging Informatics Pvt. Ltd.

Products and corporate names appearing in this manual may or may not be registered trademarks or copyrights of their respective companies, and are used only for identification or explanation and to the owners' benefit, without intent to infringe.

© 2012 Som Imaging Informatics Private Limited. The information contained herein may change without notice. The warranties for Som Imaging Informatics Private Limited products and services are set forth in the express warranty statements accompanying such products and services. Nothing herein should be construed as constituting an additional warranty. Som Imaging Informatics Private Limited shall not be liable for technical or editorial errors or omissions contained herein.

For further information please contact:

Som Imaging Informatics Private Limited

3, Chowringhee Terrace (Near Gokhale Road Post Office), Kolkata - 700020, West Bengal, India.

Tel.: + 91-8017430000, + 91-8017540000 | E-mail: info@somnetics.in | Website: www.somnetics.in

Version 1.0, March 2014, Comm 162
www.somnetics.in



Processing thousands of
OMR FORMS
is now a **FEW HOURS**
SMOOTH RIDE!
WITH 4 Simple Steps



Corporate Profile

Som Imaging Informatics Pvt. Ltd., branded as Somnetics, is an ISO 9001:2008, ISO 20000-1:2011 and ISO 27001:2005 certified organization, offering enterprise class, affordable, end-to-end solutions for business process management, imaging & informatics and content management.

With a sole objective of complementing the IT demands of SMEs, corporate and government organizations at an affordable rate, our brand is already identified as a dependable, prompt and effective solution and service provider in the market. In the last two years, the organization has witnessed rapid growth with more than 650 clients in every possible domain.

6 Main Divisions of Somnetics
Enterprise Solutions
Production Printing System & Wide Format Imaging
Office Automation
Enterprise Content Management
Enterprise Print Management
Customer Support

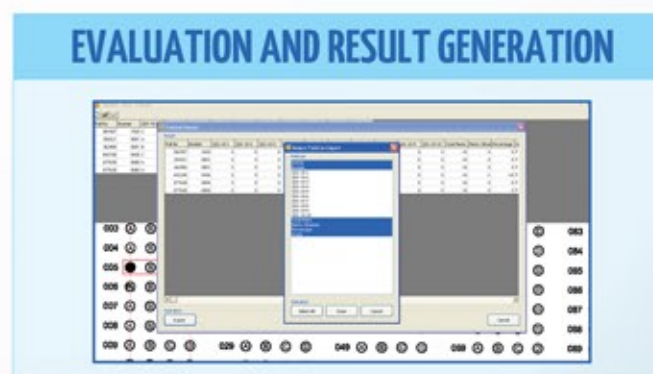
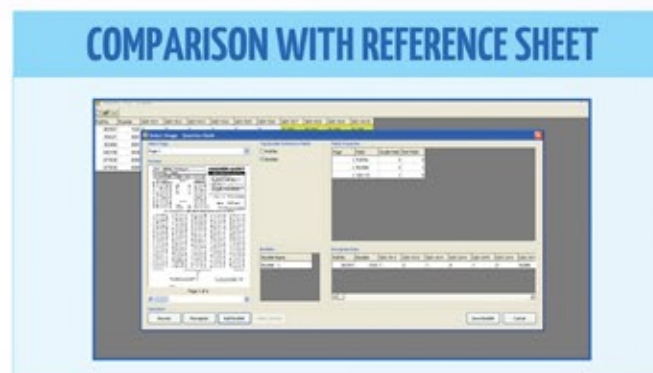
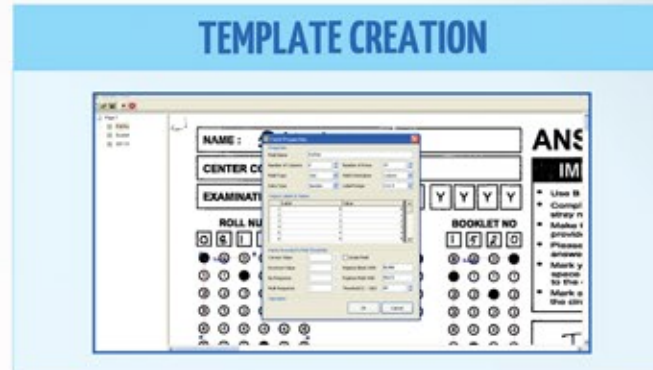
About iForm

OPTICAL MARK RECOGNITION

Developed with latest image processing technology, iFORM facilitates smooth processing of thousands of OMR sheets within a few hours, before generating accurate results and enabling web publications. Rigid OMR scanners that once resulted in inaccurate reading and supported only manual search of data, can now be replaced by this smoothly operated automatic desktop application. All you need to do is, install the application without any hassle and save the scanned sheets in TIFF format for best results.

iFORM Stands Out Because

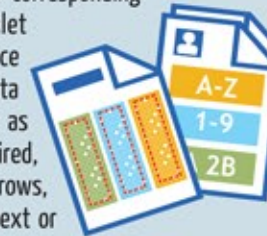
- It permits multiple page reading (7,500 pages/hour)
- Reads double sided (duplex) and multipage forms
- Supports batch image processing
- Has an easy-to-use Windows interface
- Has search option for quick retrieval of a result set, using Roll No or Booklet Code
- Supports editing of wrong data through typing and overwriting. (This is impossible with traditional OMR scanners. It is beneficial if the candidate marks his personal details incorrectly or lightly)
- Adjustable OMR Bubbles threshold option to read light bubble marks
- Data tallying and extraction from a reference booklet where all bubbles (subjected to analysis) are marked correctly
- Tags and clusters all forms with the same booklet code together for immediate comparison with the reference sheet
- Generates results in CSV that enables publishing to any media
- Facilitates grade test and tallies surveys
- Works on plain paper scanned as TIFF, JPG, BMP in monochrome
- No need to add question text manually
- Provision for task saving, backup and resumption
- Affordable and user-friendly



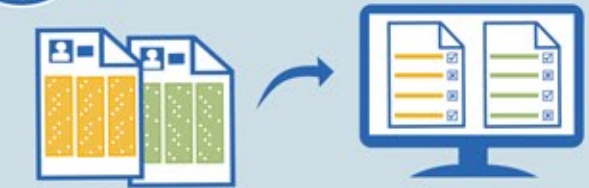
The 4 Steps

STEP 1: TEMPLATIZE

You mark the fields (make template) included in the OMR form, from where iFORM extracts the corresponding bubble values such as Name, Booklet Number, Ticket Number, Multiple Choice markings etc. Each field facilitates data analysis for that selected area. Create as many data fields (template) as required, determining the number of columns, rows, readability orientation and data type (text or numbers) for each.

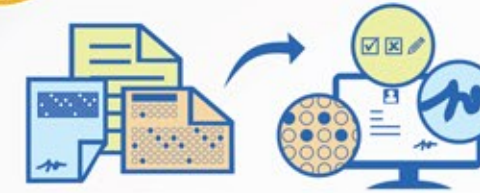


STEP 2: FORM PROCESSING



Select and import all scanned answer sheets that are saved in TIFF, JPG, BMP format. Create and import a reference OMR sheet for each booklet number, where all bubbles are marked correctly. Select the 'Tag Booklet Reference Field' option to cluster all those OMR sheets/forms whose booklet number corresponds to that of the imported reference sheet.

STEP 3: EVALUATION



The "Evaluate" menu is used for marks calculation and all related evaluation process. iFORM also permits data editing and overwriting for the unrecognized values as a result of light bubble marking (below the determined threshold setting). The time consumed by this process can depend on the number of the OMR sheets being evaluated.

STEP 4: RESULT GENERATION



The result is exported in CSV file, which can be published to any media. The results can be sorted according to name, marks, ranking, etc.

SYSTEM REQUIREMENTS

HARDWARE: Intel Dual Core Processor with 2 GB RAM | Storage - 80 GB

SOFTWARE: OS - Windows xp/ 7/8 | Net connectivity

SCANNER: 8.5 x 11 inches Sheet | Color dropout option | Automatic Document Feeder (ADF) with 20+ sheet tray | Microsoft WIA compatible driver

DEPLOYMENT MODES

OWNERSHIP MODEL

The Customer owns the software (iFORM) and the required hardware devices (scanners and printers), which may or may not be bought from us. We provide hand-holding training and long term support. However, the Customer can resort to us for part of the service if skilled manpower is required.

BENEFITS

- You own all assets
- One time investment
- "Do-it-yourself" at your own convenience
- Product quality comply with ISO 9000 and ISO 27000 framework

FULL SERVICE MODEL

This is a 360 degree service from our end encompassing OMR forms designing, form printing, printing of hall tickets (for examination process), scanning of filled forms, data extraction, data processing, result generation and output printing. You need not own any software or hardware as we execute the entire process with our resources, within a stipulated time.

BENEFITS

- With us, you can avoid the multi vendor hassle
- On-site service with complete data security
- Strict adherence to deadline and SLA
- Strict compliance with ISO 20000-1:2011 Service Management framework